

# Annual Review



**kaibosh**  
FOOD RESCUE

2024/25



## Our Vision

Zero Food Poverty, Zero Food Waste.

## Our Mission

To be the link between the food industry and organisations that support people in need.

## Our Values

Kaibosh encourages staff, volunteers and trustees to be: courageous, compassionate, smart, genuine and independent.

Kaibosh is a not-for-profit organisation that acts as a link between the food industry and community groups that support people in need.

We rescue quality surplus food in the Wellington, Hutt Valley, Kāpiti and Horowhenua regions and provide it to those in our community who are struggling to make ends meet.

Kaibosh also operates as a distribution hub for the New Zealand Food Network, which collects donated bulk food from producers, growers and wholesalers around the country.

# Contents

<b>Our Year at a Glance</b>	2
<b>Our New Initiatives</b>	4
<b>Our People</b>	7
<b>Our Community</b>	11
<b>Our Chair &amp; CE Report</b>	21
<b>Summary Financial Statements</b>	25

*Cover image: Kaibosh Kāpiti-Horowhenua staff member, Iain, rescuing oversized cabbages from a local grower, donated to our Second Harvest project.*

Kaibosh is a founding member of the Aotearoa Food Rescue Alliance



Kaibosh directly contributes to these UN Sustainable Development Goals



# Our Year at a Glance

01 July 2024 – 30 June 2025

**5,308,228**  
kilograms of kai  
rescued & redistributed  
by Kaibosh  
since 2008!

**95**

Food Donors

**3**

Locations

**164**

Community Partners



**900,521**KG  
OF FOOD RESCUED & DISTRIBUTED

## Food by Group



**57%**  
PRODUCE



**13%**  
DAIRY & EGGS



**7%**  
MEAT

**77%**

HEALTHY KAI\*



**2,001,158**  
MEALS WORTH OF FOOD PROVIDED\*\*



**2,386,380**KG CO<sub>2</sub>e  
EMISSIONS PREVENTED\*\*\*



**9%**  
OTHER FOODS



**3%**  
READY MEALS



**1%**  
DRINKS



**10%**  
BAKERY

## Cost per Kilogram of Food Rescued

**\$1.38**

2024/2025

**\$1.59**

2023/2024

**\$1.65**

2022/2023

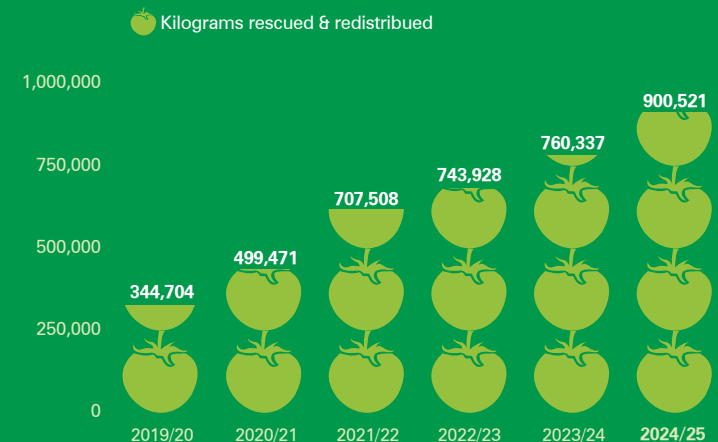
**\$1.46**

2021/2022

**\$1.83**

2020/2021

## Year-on-year 2019–2025



\* Kaibosh targets 70% nutritious food types (fresh produce, meat, dairy & eggs).

\*\* Based on 450g per meal metric  
\*\*\* Based on AFRA calculation

# Our New Initiatives

## Kaibosh Kitchens

Rescuing repurposing and sharing kai with dignity



Food saved

Our food rescue kitchens have been bustling with volunteers cooking rescued food into nourishing kai for our communities.

In Pito-one, our Kitchen Coordinator and volunteers cook three days a week. Using 'kitchen kai' set aside by food sort volunteers, they create soups, sauces, traybakes, preserves, baking and more — transforming surplus or past-best produce and other ingredients.

Our Kāpiti kitchen focuses on utilising seasonal 'second harvest' produce. With our 'chop & chat' volunteers, food is turned into wholesome kai in big-batch cooking sessions, as well as in workshops with schools and marae.

This mahi reflects the essence of Kaibosh, practical action, collaboration and care. It shows what's possible when communities come together, valuing food as a taonga and ensuring good kai is never wasted.

**“We’re turning the squishy and bruised fruit and veges into amazing kai for whānau.”**

**Volunteer, Kaibosh Kitchen Pito-one**



Local kai sustaining communities and strengthening regional food system resilience.

## Kaibosh Second Harvest

Pilot project (launched May 2024)



Produce rescued(kg)



Farm Partners



Produce varieties

In 2024, we began visiting generous local growers in Kāpiti and Horowhenua to harvest or collect crops that aren't going to be sold, ensuring this valuable kai is used for its intended purpose — to feed people.

We've now established regular collections with partner farms, adding large volumes of fresh, healthy produce to our distribution—nutritious kai that's both deeply appreciated and urgently needed by our communities.

The majority of food collected has been staple crops like potatoes, onions and pumpkins, which are versatile and store well, along with seasonal leafy greens, leeks, cabbages, feijoas and pears.

**“Having potatoes all winter has been phenomenal to put into the boxes so families can feed their kids.”**

**Kapiti Impact Hub**





# Our People

People are at the heart of Kaibosh's mahi – thanks to everyone who works so hard to help us get quality surplus food to those who need it most.



# Our Volunteers

01 July 2024 – 30 June 2025



**Volunteer total at 30 June 2025\***



**Pōneke**



**Value of donated hours based on 2024 Living Wage**



**Pito-one**

**Volunteer survey**

**98%** Feel valued for their Kaibosh mahi

**93%** Would recommend Kaibosh as a place to volunteer



**Paraparaumu**

**38%** Response rate

\* Volunteer roles include food sorter, food rescue driver support, market rescuer, operations support, kitchen support. Board members and specialist volunteers are not included in this figure.



# Our Community

Our mahi is a collaboration between our volunteers, our food donors, the community groups we work with and the many organisations, businesses and individuals who support us.

**“Each box offers a chance to offer forward kindness. From those who donate to those who sort food – that thread of care and compassion runs through.”**

**Strathmore Park & Raukawa Community Centres**



**“Together, we’re not just feeding people; we’re nourishing hope and strengthening our community.”**

**Hora Te Pai**

# Our Funders

As well as our generous family of regular and one-off donors, we’d like to thank the following funders:



**TAI SHAN**  
FOUNDATION

**T-GEAR**  
Charitable Trust



**Absolutely Positively Wellington City Council**  
Me Heke Ki Pōneke



Clyde Graham Charitable Trust



John Ilott Charitable Trust



EM Pharazyn Trust  
FH Muter Trust

# Our Food Donors

## Wellington City

Air New Zealand  
Alamir Bakery  
All Good Organics  
Baron Hasselhoff's  
Bloomberg  
Bohemein Fresh Chocolate  
Commonsense Organics (Kilbirnie)  
Commonsense Organics (Tory St)  
Community Fruit  
Everybody Eats  
Food Envy  
FreshChoice Cuba  
Garage Project  
Harbourside Market  
Havana Coffee Works  
House of Dumplings  
Kai Ika Project  
LSG Sky Chefs NZ Ltd  
Market Gardeners Grenada  
Moore Wilson's  
Nando's Courtenay Place  
Nando's Porirua  
New World Chaffers  
New World Island Bay  
New World Karori  
New World Newtown  
New World Thorndon  
Newtown Market  
Nosh Catering

PAK'nSAVE Kilbirnie  
Peoples Coffee  
Sky Stadium (Delaware North)  
Team Global Express (Toll)  
Urban Harvest  
Vittoria Food & Beverage  
Wellington City Mission  
Wonky Box (via City Mission)  
Woodhaven Gardens  
Woolworths Cable Car Lane  
Woolworths Crofton Downs  
Woolworths Karori  
Woolworths Kilbirnie  
Woolworths Newtown  
Zaida's Bakery

## Hutt Valley

Community Fruit  
Farrah's  
Fix & Fogg  
Fortune Foods  
Gilmours Petone  
Good Fortune Coffee  
Grazie  
Groenz GSFC  
Mexicano  
Moore Wilson's  
Mountain Gold Honey  
Nando's Lower Hutt  
New World Lower Hutt

New Zealand Food Network  
PAK'nSAVE Lower Hutt  
PAK'nSAVE Petone  
Seeds to Feeds  
Service Foods  
Waiwhetu Fruit & Vege Co-op  
Woolworths Lower Hutt  
Woolworths Maidstone  
Woolworths Petone  
Woolworths Queensgate  
Woolworths Upper Hutt  
Woolworths Wainuiomata  
Zany Zeus

## Kāpiti & Horowhenua

Bennik Family Farms (NZ Egg Group)  
Bidfood  
BP Kāpiti  
BP Ōtaki  
BP Paraparaumu  
Commonsense Organics  
Community Fruit  
Fish for Good  
Four Square Waikanae  
Kuku Orchard  
Levin Farm  
New World Kāpiti

New World Ōtaki  
New World Waikanae  
Olde Beach Bakery  
PAK'nSAVE Kāpiti  
Pescini Brothers  
Purebread  
Waikanae Butchery  
Waikawa Fresh  
Waikōkopu Grove & Orchard  
Woolworths Ōtaki  
Woolworths Paraparaumu  
Woolworths Waikanae



**“The need for kai in our organisation is ever increasing along with the cost of living. Kaibosh helps consistently with vulnerable people and their tamariki.”**

**Birthright Hutt Valley**

# Community Partners

## Wellington City

- Ahumai - Taranaki Whānui ki te Upoko o te Ika
- ALC Mataora Tūmanako
- Alecia’s Koha Kitchen
- Aman Islamic Trust
- Arohanui Strings Wellington
- Berhamphore Community Centre
- BGI
- Cannons Creek Youth Charitable Trust
- Central Park Flats
- Compassion Centre
- DCM
- Duncan Terrace Flats
- Easy Access Housing (Atareira)
- Education to Employment
- EKTA - Dya Ethnic Food Bank
- Emerge - Tawa
- Emerge Wellington - Henry Street
- Emerge Wellington - King Street
- Everybody Eats
- From The Inside Out
- Hanson Court Flats
- Kāinga Ora - Church Street Flats
- Kāinga Ora - Te Mara Flats
- Karori Community Centre
- Kilbirnie Community Centre
- Kotuku Flats
- Kumutoto Restoration Project
- Linden Community Centre
- Lyll Bay Church
- Miramar & Maupuia Community Centre
- Newtown Community & Cultural Centre
- Newtown Flats
- NZ School of Dance
- Pasifika Advancing
- Pathways - Access and Choice
- Pathways - Mental Health
- Pukehīnau Mara Kai
- Raukawa Community Centre
- Rintoul Street Flats
- Room at the Inn
- Salvation Army - Hope Centre
- Salvation Army - Te Puaawai
- St Aiden’s Church / Miramar Foodbank
- St Paul’s Lutheran Church
- St Thomas’ Church
- Strathmore Kindergarten
- Strathmore Park - Te Tūhunga Rau
- Street Kai Missionaries
- TalentRISE Foundation
- Te Ara Hou
- Te Kākano Marae
- Te Tai Ohinga - Central City Youth Hub
- Te Tira Ahu Pae
- Te Tiriti Action Group
- Te Waka Whaiora
- Te Whare Nukunoa
- Toi Whakaari
- The Free Store
- VietKids
- VUWSA
- WELLfed
- Wellington City Mission
- Wellington Community Mental Health
- Wellington Women’s House
- Whakamātūtū - Depression Recovery Trust

## Community Partners continued

### Hutt Valley

Arohanui Strings Hutt Valley  
Birthright  
CAP Upper Hutt  
CAP Wainuiomata  
Common Unity  
Community Law  
Emergency Housing (Oasis Network)  
Hutt City Women's Refuge  
Ignite Sport  
Kōkiri Marae  
Koraunui Stokes Valley Community Hub  
Lower Hutt Foodbank  
Manaaki Whānau  
MIX  
Maturangi Māori Wardens  
Naenae Boxing Academy  
Naenae Hub  
Oasis Network  
Ōrongomai Marae  
PACT  
Pasifika Advancing  
Pomare Taita Community Trust  
Raumanuka  
Remutaka Baptist Church  
Salvation Army Hutt City  
Salvation Army Upper Hutt  
Samoa Church Stokes Valley  
Shakti  
St Vincent De Paul Naenae  
St Vincent De Paul Stokes Valley  
Stokes Valley Food Bank  
Tamariki Ora  
Te Huinga o te Whanau  
Te Kākano o te Aroha  
Te Paepae Arahi Trust  
Te Puna Manawa  
Team Naenae Trust  
The Learning Connection  
The Oasis Church  
Timberlea Community House  
Tonga Church Stokes Valley  
Trentham Bread and Veges  
Upper Hutt Foodbank  
Upper Hutt Housing Trust  
Vibe  
Wainuiomata Community Hub  
Wainuiomata Marae  
Walter Nash Centre  
Whānau Family Support Services  
Youth Inspire

### Kāpiti & Horowhenua

Atareira  
Barnardos  
Birthright Kāpiti  
Birthright Ōtaki  
Cancer Society Wellington Division  
Coast Community Church  
Community Connections - Kāpiti  
Kiwis  
Food Bank Kāpiti  
Hope Hub  
Hora Te Pai  
Kāpiti Art Studio  
Kāpiti College  
Kāpiti Community Kitchen  
Kāpiti Impact Hub  
Kāpiti Living Without Violence  
Kāpiti Loss and Grief Centre  
Kāpiti Women's Centre  
Kāpiti Youth Support  
L'Arche Kāpiti Inc  
Māoriland Hub  
Mary's Guest House  
Ngatiawa Community  
Ngāti Raukawa ki te Tonga  
Ōtaki Baptist  
Ōtaki Elim  
Paekākāriki School  
Paraparaumu Baptist Church  
Paraparaumu College  
Pathways Kāpiti  
Raukawa Whānau Ora  
Recovery Kāpiti  
Salvation Army Kāpiti  
Shed Project Kāpiti  
St Vincent's Paraparaumu  
Te Ara Korowai  
Te Awhi Rito  
Te Nikau  
Te Umu ki Rangituhi  
The Hub Ōtaki  
Waikanae Foodshare  
Waiopahu College  
Whānau Wellbeing Hub  
Whirlwind  
Zeal Kāpiti

### Animal Charities

Animal Services Hutt City  
Black Sheep Animal Sanctuary  
Ngā Manu Nature Reserve  
SPCA  
Wellington Bird Rehabilitation Trust

At Kaibosh, we aim to keep kai up the food recovery hierarchy. We partner with local animal charities so edible leftovers not fit for humans, are shared with them. The rest is composted, keeping food waste out of landfill.

# Our In Kind Donors

The following generously donated their services or provided sponsorship to Kaibosh in 2024-2025.

All Good  
Aro Bake  
Barefoot Sports  
Baron Hasselhoff's  
Bloomberg  
Buddle Findlay  
Bunnings (Lyal Bay, Petone, Porirua, Wellington)  
Bus Stop Café (Kirsty Green)  
Coffee Supreme  
Community Fruit Wellington  
Conscious Valley Farm  
Dark Horse Coffee  
Dawn Logan  
ecoseeds  
Elysian Foods  
Emily King  
Everybody Eats  
Fix & Fogg  
Fonterra Farm Source  
Garage Project  
Go Media  
Good Fortune Coffee  
Harrington's Smallgoods  
Heyday Beer Co  
Hiremaster  
Hopper Home  
Jenn Hadley at FolkYEAH

Karma Cola  
Le Cordon Bleu New Zealand  
Margot (Tom & Juno)  
Montfoort  
Moore Wilson's  
PAK'n'SAVE Kilbirnie  
Phantom Billstickers  
Pronto Electrical  
Purebread  
Rita 89 Aro  
Rutherford and Bond  
Scots College  
Seeds to Feeds  
Shevington Farm Free Range Eggs  
StarNow  
Te Haunui Farms  
The Big Picture  
The Chamber Pot Pourri Ensemble  
The Roastery  
The Wellington Company  
Urban Dream Brokerage  
Vivian Morresey  
VML  
Waikanae Butchery  
Wellington College Runathon  
Wellington International Airport  
Wellington Timebank



# Our Chair & CE Report

The year has been one of determination, resilience, new projects and new records. As demand for food support across Aotearoa continues to grow, Kaibosh has stood strong – doing all we could to ensure more quality kai reached people who needed it.



Mark Ratcliffe,  
Chair



Susie Robertson,  
Chief Executive/Kaiārahi

## Tēnā koutou katoa, This past year has been one of determination, resilience, new projects and new records.

As demand for food support across Aotearoa continues to grow, Kaibosh has stood strong – doing all we could to ensure more quality kai reached people who needed it, despite facing uncertainty in the funding landscape.

In May, we passed a significant milestone – five million kilograms of food provided to our community since Kaibosh began in 2008!

This year, our team redistributed 900,521kgs of food — our biggest year yet. Much of this growth came from fresh produce collected directly from growers in our region, raising the proportion of healthy food (dairy, meats, eggs & produce) to 77% distributed to the community. This nourishing kai reached 164 charity and community partners across the Greater Wellington Region.

This year we have strengthened our commitment to Te Tiriti o Waitangi by connecting with Iwi throughout the region. We will continue to build respectful partnerships to ensure our mahi supports better outcomes for Māori and reflects a shared vision of equity and manaakitanga.

We continued to rely on the generosity of our food donors, with 95 businesses and groups contributing food throughout the year. Our incredible volunteer team – 257 strong – gave 13,431 hours of their time to help collect, sort and distribute

kai and assist us with operations support at our sites.

Yet behind these achievements lies a challenging truth: this was a year of toughing it out. While waiting on funding decisions and navigating uncertainty, we continued to see escalating demand for food.

In response, Kaibosh leaned into action:

- expanding our kitchen activities - opening a second smaller kitchen in Kāpiti to increase our capacity to prepare nourishing kai for our community partners.
- developing Second Harvest - connecting surplus fresh, seasonal produce from growers, farms and orchards directly with our community partners.

These initiatives are the start of longer-term solutions to complex problems

**Together, we're not just fighting food waste or food insecurity – we're shaping a more just, resilient and sustainable food system for our region.**

and wouldn't be possible without the collective commitment of our volunteers, donors, partners and supporters.

This year saw some significant changes

on the Kaibosh Board. We farewelled two long-standing and dedicated members – Kellie Benner and Paul Harford, our outgoing Treasurer. Their guidance and mahi over the years have helped shape Kaibosh, and we're deeply grateful for their service.

At the same time, we welcomed a wealth of fresh energy and new perspectives with the appointments of Dr Ganesh Ahirao (who steps into the Treasurer role), Toni Grace, Kate Mitcalfe and Cheryl Barnes. Their diverse expertise and commitment to the kaupapa will strengthen our governance as we move into Kaibosh's next chapter.

After nine years of service on the Board, including six years as Chair, it was also time for Kathryn Robinson to step down. Kathryn led Kaibosh through COVID, a huge period of growth and supported us to evolve our marketing strategy. We are deeply grateful to her for all the passion and calm, practical support she brought to Kaibosh. Mark Ratcliffe, Kaibosh Trustee since 2020, has stepped into the role, bringing valuable leadership and governance experience to steer Kaibosh into the future with integrity, common sense and heart.

Speaking of journeys, you may have seen Kaibosh feature in Meridian's advertising about their decarbonisation fund which funded our two new EV vans and helped with our ambition to transition to an electric fleet. Soon we

will be taking another step towards that by leasing to own an EV truck for our Second Harvest programme.

If you want to help support us with this game-changing mahi connecting with primary producers in our region, please get in touch.

**Nga mihi nui for standing with us.**



**Mark Ratcliffe**  
Chair, Board of Trustees



**Susie Robertson,**  
Chief Executive/Kaiarahi

### Our Board of Trustees

Mark Ratcliffe (Chair), Kathryn Robinson (outgoing Chair), Dr Ganesh Ahirao (Treasurer), Paul Harford (outgoing Treasurer), Dame Diana Crossan, Ainsleigh Laumatia, Stephanie Coutts, Kate Mitcalfe, Toni Grace, Cheryl Barnes, Kellie Benner (outgoing trustee).



# Summary Financial Statements

For the year ended 30 June 2025

# Summary Statement of Financial Performance

For the year ended 30 June 2025

	2025 \$	2024 \$
<b>Revenue</b>		
Donations, koha, bequests, other general fundraising activities*	989,822	333,734
General grants	699,516	564,688
Capital grants and donations	85,166	-
Government service delivery grants/contracts	142,661	222,768
Non-government service delivery grants/contracts	15,744	-
Revenue from commercial activities	580	-
Interest, dividends and other investment revenue	33,937	34,182
Other revenue	20,708	9,415
<b>Total Revenue</b>	<b>1,988,133</b>	<b>1,164,788</b>
<b>Expenses</b>		
Expenses related to fundraising	15,267	15,749
Employee remuneration and other related expenses	998,305	964,467
Volunteer related expenses	7,148	8,621
Other expenses related to service delivery	324,328	315,508
Other Expenses	80,588	77,911
<b>Total Expenses</b>	<b>1,425,636</b>	<b>1,382,255</b>
<b>Surplus/(Deficit) for the year</b>	<b>562,497</b>	<b>(217,467)</b>

\*includes a one-off bequest of \$640,000

# Summary Statement of Cashflows

For the year ended 30 June 2025

	2025 \$	2024 \$
Net Cash Flows from Operating Activities	596,805	(72,932)
Net Cash Flows from other Activities	(677,132)	(6,856)
<b>Net (Decrease) in Cash</b>	<b>(80,327)</b>	<b>(79,788)</b>

# Summary Statement of Financial Position

As at 30 June 2025

	2025 \$	2024 \$
<b>Assets</b>		
<b>Current Assets</b>		
Cash and short-term deposits	200,767	281,094
Debtors and prepayments	22,713	30,604
Investments	1,055,900	460,000
<b>Total Current Assets</b>	<b>1,279,380</b>	<b>771,698</b>
<b>Non-Current Assets</b>		
Property, plant and equipment	267,406	266,763
<b>Total Non-Current Assets</b>	<b>267,406</b>	<b>266,763</b>
<b>Total Assets</b>	<b>1,546,786</b>	<b>1,038,461</b>

	2025 \$	2024 \$
<b>Liabilities</b>		
<b>Current Liabilities</b>		
Creditors and accrued expenses	16,289	22,628
Employee costs payable	83,357	57,657
Unused donations and grants with conditions	107,512	181,044
<b>Total Current Liabilities</b>	<b>207,157</b>	<b>261,329</b>
<b>Total Liabilities</b>	<b>207,157</b>	<b>261,329</b>
<b>Total Assets less Total Liabilities (Net Assets)</b>	<b>1,339,629</b>	<b>777,132</b>
<b>Accumulated Funds</b>		
Opening Balance	777,132	994,599
(Deficit)/Surplus for the year	562,497	(217,467)
<b>Total Accumulated Funds</b>	<b>1,339,629</b>	<b>777,132</b>
<b>Funds held in reserve</b>	<b>1,072,223</b>	<b>510,369</b>

*The Board of Trustees believes it is prudent for Kaibosh to aim for, and work towards, holding the equivalent of six months of operating expenses in net assets as a reserve against unforeseen adverse circumstances.*

The summary financial statements of Kaibosh are presented for 2025. The information was extracted from the Performance Report as audited by Moore Markhams, which was approved by the board on 25 August 2025. They cannot be expected to provide as complete an understanding as provided by the Performance Report.

The Performance Report is available upon request from the Treasurer of Kaibosh.

The Performance Report has been prepared in accordance with Generally Accepted Accounting Practice in New Zealand (NZ GAAP). The Performance Report complies with the XRB (NFP) Standard of the basis that Kaibosh does not have public accountability and has total expenses equal to or less than \$5,000,000.

# kaibosh

FOOD RESCUE

## Wellington City

11 Hopper Street  
Mount Cook  
Wellington 6011  
04 385 0825

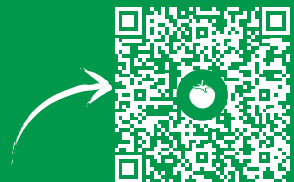
## Hutt Valley

4 Petone Avenue  
Petone  
Lower Hutt 5012  
04 589 1015

## Kāpiti-Horowhenua

4d Sheffield Street  
Paraparaumu  
Kāpiti 5032  
04 260 8118

[www.kaibosh.org.nz](http://www.kaibosh.org.nz)  
[foodrescue@kaibosh.org.nz](mailto:foodrescue@kaibosh.org.nz)



**Donate today**

Additional photos with thanks from Alex MacGibbon, April Brimer, Bunnings Lyall Bay, Captured by Friday, Kai Ika, Renata Bijholt, Soeum Hoeung, Neville Winsley, Te Toi Mahana, Visit Kāpiti